

## Control Station

The Control Station (CS) provides a centralized location for activating, controlling and monitoring all system equipment. The CS also has the ability to broadcast live public address, pre-recorded messages and siren tones. Each CS consists of a PC with the ATI Systems' Windows-based software and the REACT 4000 Communication Control Unit (CCU). The software provides an extremely user-friendly, graphics-based interface to display a detailed map of the county, facility, base or campus with color-coded icons to visually indicate the location and status of the sirens and remote units.

### Standard Equipment

- Central Control Unit
- Microprocessor controller
- Conventional VHF or UHF radio
- Front panel control
- LCD display
- Internal power supply
- Antenna connector
- Hand-held microphone for live PA broadcasts
- Desktop computer station
- ATI Systems' customized software



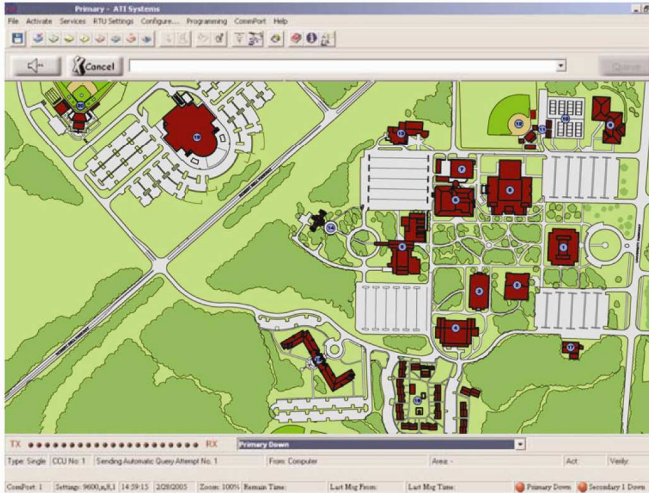
### Optional Features

ATI Systems offers fully customizable solutions, including the following features:

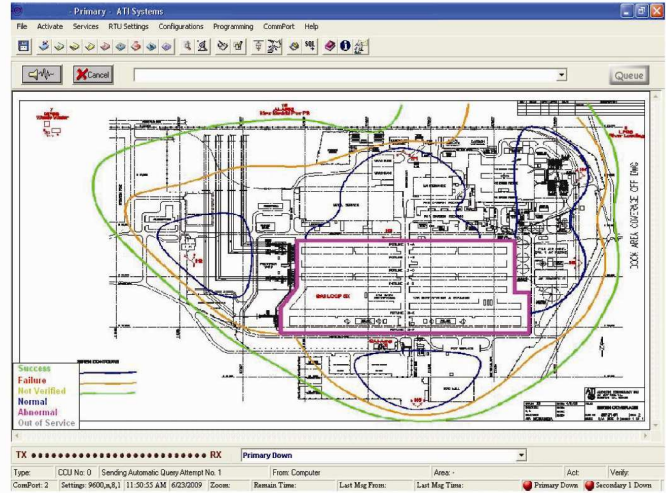
- Touch screen or flat screen monitor upgrade
- Laser jet printer upgrade
- Rack mount station upgrade
- Customized maps within ATI Systems' software
- Trunked radio upgrade
- Flexible, redundant communication options including IP, Ethernet, twisted pair/phone line, cellular and satellite
- Antenna surge protector
- LED message sign or strobe light
- Interfaces to pagers, weather stations, network and telephone alerting systems

### Key Features

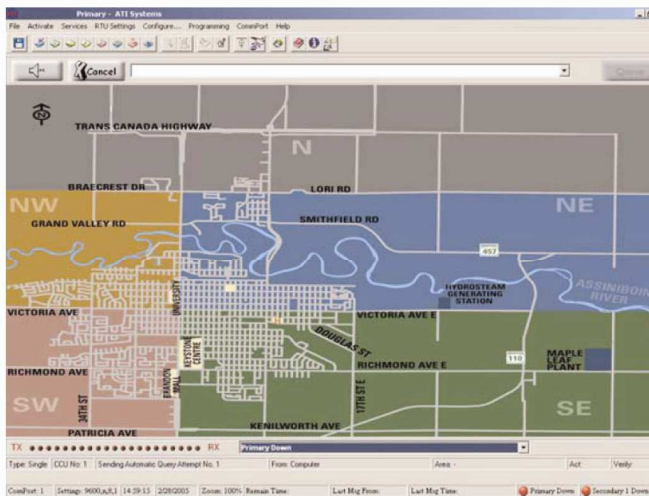
- Simple and compact design with user-friendly interface
- Minimal training required
- Manual and automatic tone alert, voice message or live PA activation, cancellation, testing and reporting of all system activities
- Manual and automatic silent testing
- Operates both outdoor and indoor alerting units
- Activates single, group or system-wide tone alerts, voice messages or live PA
- Configures the alert tone or voice message type, duration and number of cycles
- Archive and print system activity reports
- Monitors and displays unsolicited alert messages from remote sites
- Standard VHF or UHF radio receives and transmits FSK data signals
- Message encryption and security coding prevent unauthorized system activations
- Supervises communication with additional CCUs for redundant activation points



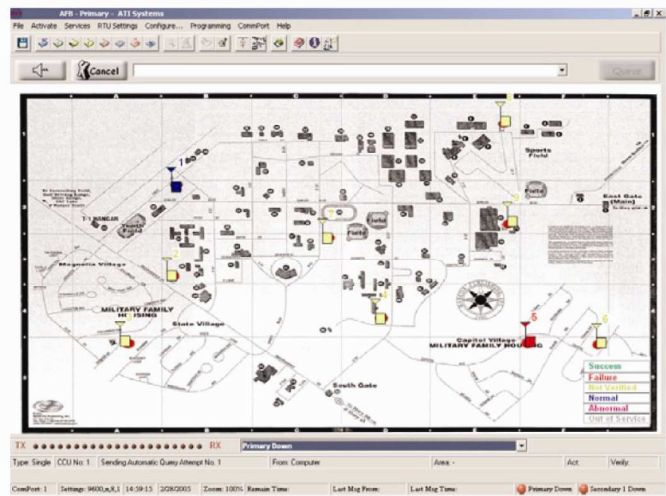
**Campus Software Screenshot**



**Industrial Software Screenshot**



**Community Software Screenshot**



**Military Software Screenshot**



**Sample Activation**



**Sample Activation**

All information and specifications are subject to change without notice, and may contain typographical or other errors.